

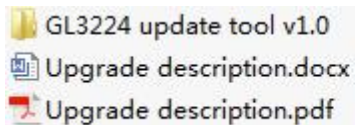
Card Reader Software Upgrade Instruction

1. Unzip the compressed (.rar) file “GL3224 Card Reader Software Update Instruction” to the folder with the same name.




(Figure 1)

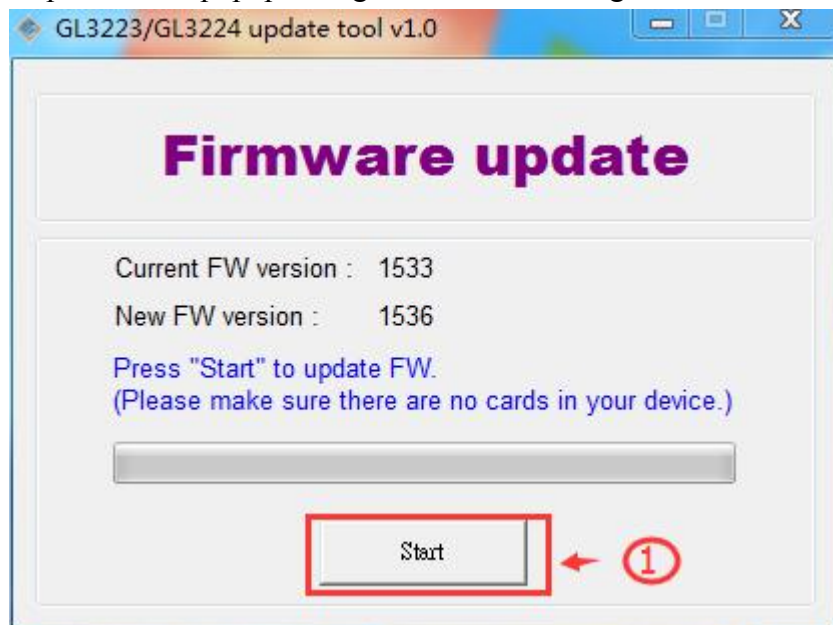
2. You will see the following files in the folder as shown in the Figure 2.



(Figure 2)

3. Connect the Card Reader without card in it to an available USB port of your computer, open “GL3224 update tool v1.0” folder, and run the “FWUpgradeTool.exe” application, and click

 option in the popup dialog as shown in the Figure 3.



(Figure 3)

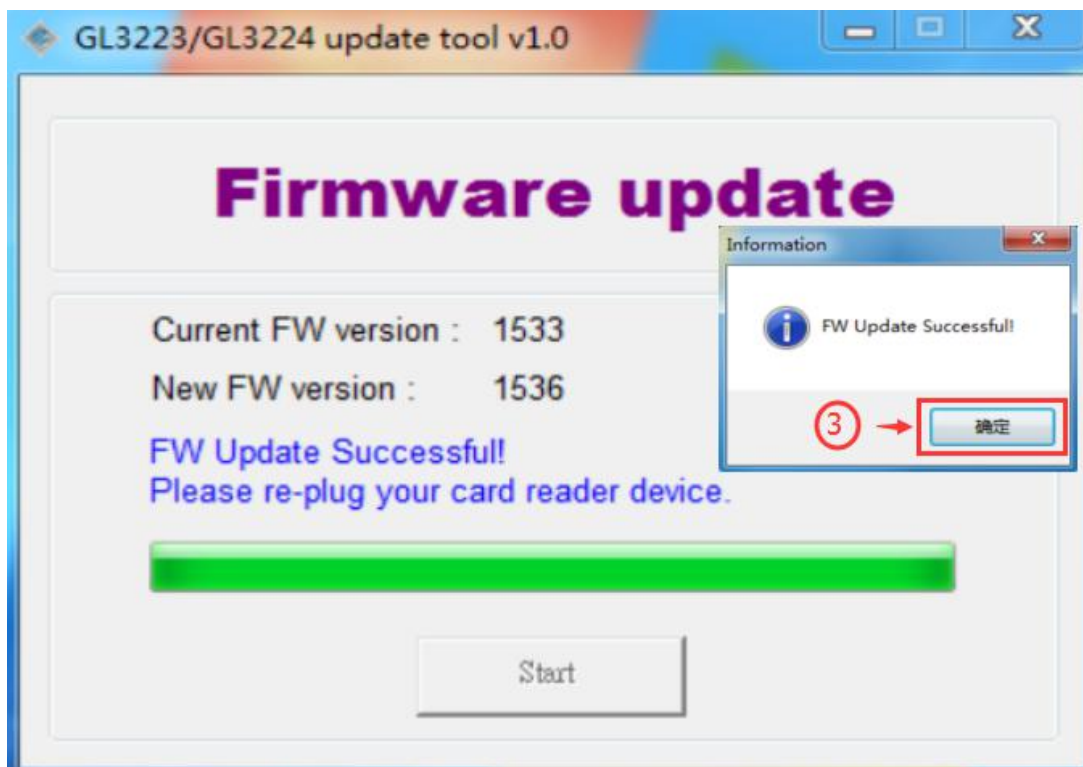
Note:

If Current FW version displays “NO device is found”, the firmware cannot be updated. Please re-plug the card reader and open the update tool.

Click “OK”



(Figure 4)



(Figure 5)

4. Click "OK" when the "FW Update Successful!" dialog pops up. Re-plug the card reader and now it can be used normally.
5. Re-plug the card reader and open the upgrade tool again if you can't upgrade the card reader.
6. This software upgrade instruction is for card reader with GL3224 chipset.
7. This upgrade tool can only be run under the Win7/8/10 operating system.